



INDEX TO PROJECT

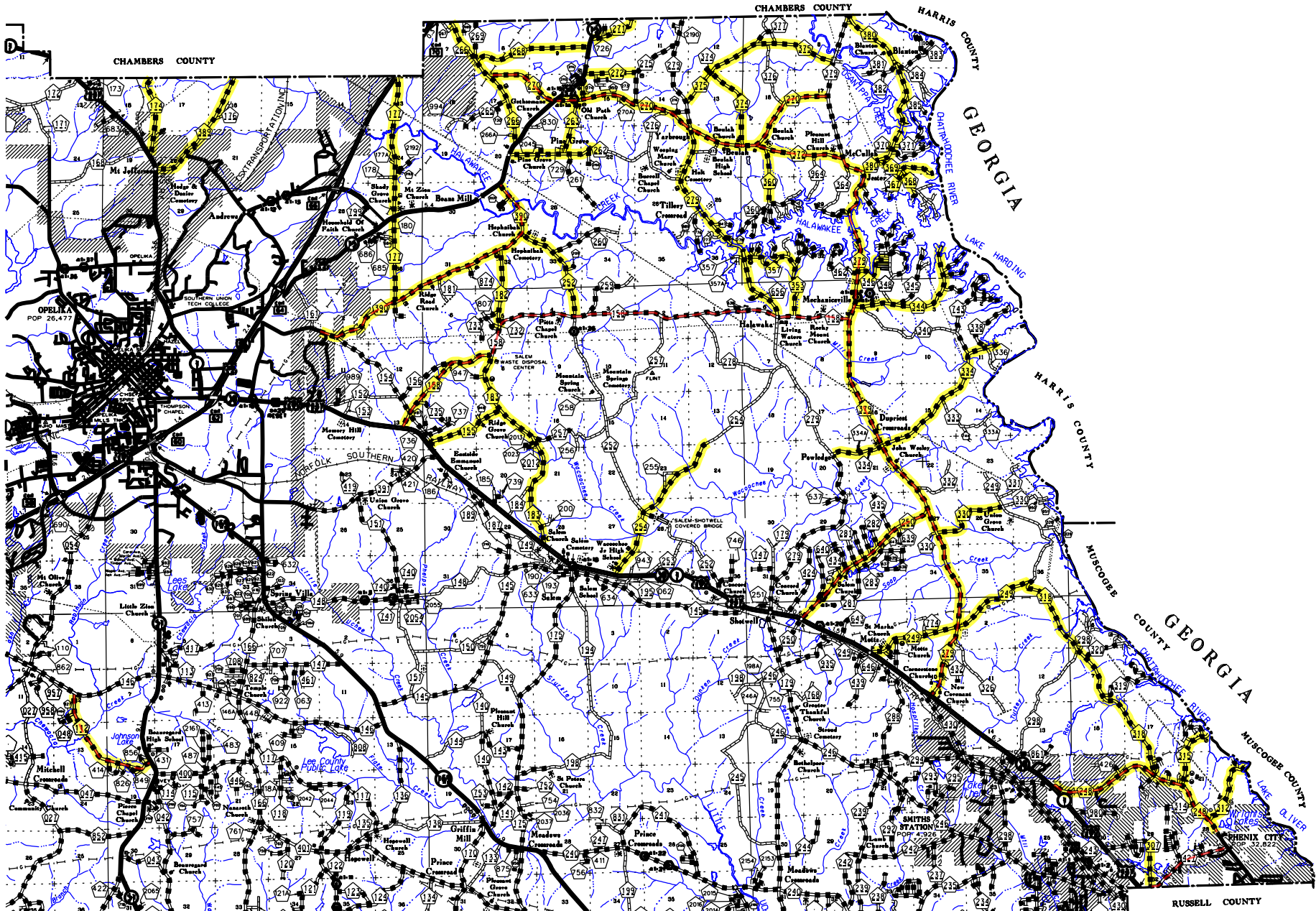
T-20-N  
T-19-N

T-19-N  
T-18-N

# LEE COUNTY

## PLANS OF PROPOSED PROJECT NO. LCP 41-148-18

FURNISHING AND INSTALLATION OF TRAFFIC STRIPE AND  
PAVEMENT MARKERS ON VARIOUS PUBLIC ROADS IN LEE COUNTY, AL



POPULATION BASED ON 2010 CENSUS

R-26-E  
R-27-E

R-27-E  
R-28-E

R-28-E  
R-29-E

R-29-E  
R-30-E

MILES

108.837

5.599

40.173

NET LENGTH OF STRIPING PROJECT  
NET LENGTH OF NEW PAVEMENT MARKERS PROJECT  
NET LENGTH OF REPLACEMENT PAVEMENT MARKERS PROJECT

STRIPING PROJECT LOCATIONS INCLUDED IN THE PROPOSAL ARE HIGHLIGHTED IN YELLOW.  
PAVEMENT MARKER PROJECT LOCATIONS ARE HIGHLIGHTED IN RED.

COUNTY ENGINEER

INDEX TO SHEETS & STANDARD DRAWINGS  
PROJECT NO. LCP 41-148-18  
LEE COUNTY

REFERENCE PROJECT NO.	FISCAL YEAR	SHEET NO.
LCP 41-148-18	2018	1A

SHEET NO.	1	TITLE SHEET
SHEET NO.	1A	INDEX TO SHEETS & STANDARD DRAWINGS
SHEET NO.	2	PROJECT LIST AND DESCRIPTION
SHEET NO.	2A	OMIT
SHEET NO.	3	PROJECT LOCATION MAP
SHEET NO.	4	OMIT
SHEET NO.	5	OMIT
SHEET NO.	6	TRAFFIC CONTROL PLAN – DETAILS FOR LANE CLOSURE TWO LANE HIGHWAY PILOT CAR AND/OR CONE APPLICATION
SHEET NO.	7-7A	TRAFFIC CONTROL PLAN – STANDARD NOTE SHEETS

THE FOLLOWING ARE SPECIAL OR STANDARD DRAWINGS CONTAINED IN THE ALABAMA DEPARTMENT OF TRANSPORTATION  
SPECIAL & STANDARD HIGHWAY DRAWINGS BOOK (U.S.CUSTOMARY UNITS OF MEASUREMENT) DATED 2018 WHICH APPLY TO THIS PROJECT.

INDEX NO.	DRAWING NO.	DESCRIPTION
801	GN-2 NOTES	STANDARD DESIGN NOTES FOR PLAN ASSEMBLIES
806	197-NPL	DETAILS OF NO PASSING LINES TWO LANE, TWO DIRECTION ROADWAY
1027	PM-705-1	DETAILS OF PAVEMENT MARKERS CLASS A, A-H AND B
1028	PM-705-2	DETAILS SHOWING APPLICATION OF PAVEMENT MARKERS
1037	PS-701-6	DETAILS OF TRAFFIC STRIPING FOR 2 LANE HIGHWAYS
1045	TCD-100	DETAILS FOR TRAFFIC CHANNELIZATION DEVICES
1049	TCM-703	PAVEMENT LEGENDS AND MARKINGS DETAILS
	(SHEET 2 OF 2)	
1214	IHS-710-12	DETAILS OF ROADWAY SIGN POST (SMALL CHANNEL AND TUBULAR SECTION)
1225	IHS-710-21	DETAIL FOR LOCATION AND MOUNTING STANDARD FLAT PANEL SIGNS ON U-CHANNEL AND TUBULAR POSTS
1229	IHS-710-23	LIGHTWEIGHT STRUCTURAL SIGN SUPPORT INSTALLATIONS
1329	SHS-29	STANDARD HIGHWAY SIGNS
1330	SHS-30	STANDARD HIGHWAY SIGNS

PROJECT LIST AND DESCRIPTION

PROJECT NO. LCP 41-148-18

LEE COUNTY

CENTERLINE AND EDGE LINE STRIPING

Section 3		East of US Hwy. 431 and North of US Hwy. 280/431
Lee Road	Length (miles)	Description
248	3.800	From US 280/431 to Phenix City city limits
307	0.928	From L.R. 427 to dead end
312	1.431	From L.R. 248 to paved driveway at dead end (Byrd Shores)
315	1.243	From L.R. 248 to dead end
318	4.711	From L.R. 249 to L.R. 248
249	4.060	North of U.S. Hwy. 280/431 to dirt portion
330	1.542	From L.R. 379 to dirt portion
250	3.226	From US 280/431 to L.R. 379
179	0.600	From U.S. Hwy. 280/431 to L.R. 279
334	4.150	From L.R. 279 to spillway
344	2.651	From L.R. 379 to gate
346	0.890	From L.R. 379 to L.R. 348
380	3.800	From L.R. 379 to L.R. 379 - Road loops
367	0.500	From L.R. 368 to fork in road
368	0.670	From L.R. 369 to dirt portion
369	1.130	From L.R. 380 to end of pavement
374	1.778	From L.R. 270 to dead end
375	3.288	From L.R. 279 to L.R. 379
372	1.715	From L.R. 270 to L.R. 379
270	7.284	From L.R. 266 to L.R. 379
360	1.100	From L.R. 372 to fork
279	4.204	From L.R. 158 to L.R. 270
379	11.162	From US 280/431 to L.R. 372
353	0.950	From L.R. 158 to L.R. 357
357	1.270	From L.R. 353 to L.R. 279
158	2.319	From U.S. Hwy. 280/431 to L.R. 183
252	2.713	From L.R. 390 to L.R. 158
254	3.158	From U.S. Hwy. 280/431 to dirt portion
155	1.500	From L.R. 183 to U.S. Hwy. 280/431
182	1.488	From L.R. 158 to L.R. 390
183	4.245	From L.R. 158 to U.S. Hwy. 280/431
262	1.717	From U.S. Hwy. 29N to dirt portion
263	1.033	From L.R. 270 to L.R. 262
390	4.947	From U.S. Hwy. 29N to Opelika city limits
271	0.893	From U.S. Hwy. 29N to county line
272	0.946	From U.S. Hwy. 29N to L.R. 275
274	0.343	From L.R. 270 to U.S. Hwy. 29N
266	2.711	From U.S. Hwy. 29N to county line
268	2.190	From L.R. 266 to U.S. Hwy. 29N
177	4.200	From county line to L.R. 390
389	2.334	From U.S. Hwy. 431N to county line
174	1.588	From U.S. Hwy. 431N to county line
Total	106.408	

NOTE: CENTERLINE STRIPE ALL ROADS AND EDGE LINE STRIPE THOSE ROADS WHICH CURRENTLY HAVE AN EDGE LINE.

EDGE LINE STRIPING ONLY

Lee Road	Length	Description
	(miles)	
112	2.429	From U.S. Hwy. 51 to L.R. 146

PAVEMENT MARKER REPLACEMENT

Lee Road	Length	Description
	(miles)	
390	4.947	From U.S. Hwy. 29N to Opelika city limits
270	7.284	From L.R. 266 to L.R. 379
372	1.715	From L.R. 270 to L.R. 379
158	9.563	From U.S. Hwy. 280 to L.R. 379
379	11.162	From US 280/431 to L.R. 372
248	3.800	From US 280/431 to Phenix City city limits
427	1.702	From L.R. 248 to Russell County Line
Total	40.173	

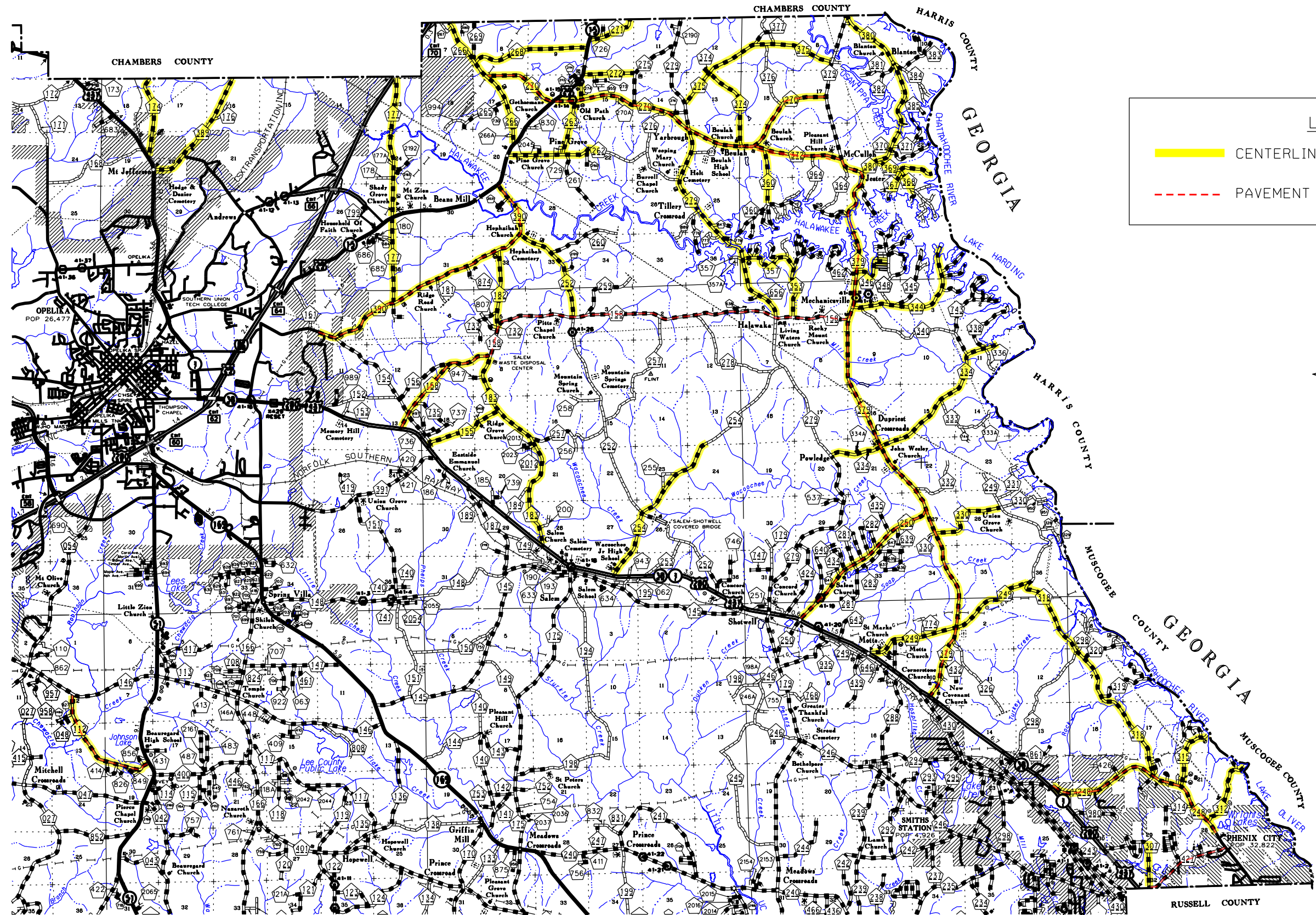
NOTE: PAVEMENT MARKER REPLACEMENT SHALL COVER THE WORK OF FURNISHING AND INSTALLING INDIVIDUAL PAVEMENT MARKERS THAT ARE MISSING ALONG ROADWAYS THAT HAVE HAD PAVEMENT MARKERS PREVIOUSLY INSTALLED.

PAVEMENT MARKERS (NONE PREVIOUSLY IN-PLACE)

Lee Road	Length	Description
	(miles)	
112	2.429	From U.S. Hwy. 51 to L.R. 146
250	3.170	From U.S. 280 to L.R. 379
Total	5.599	



PROJECT LOCATION MAP  
PROJECT NO. LCP 41-148-18  
LEE COUNTY



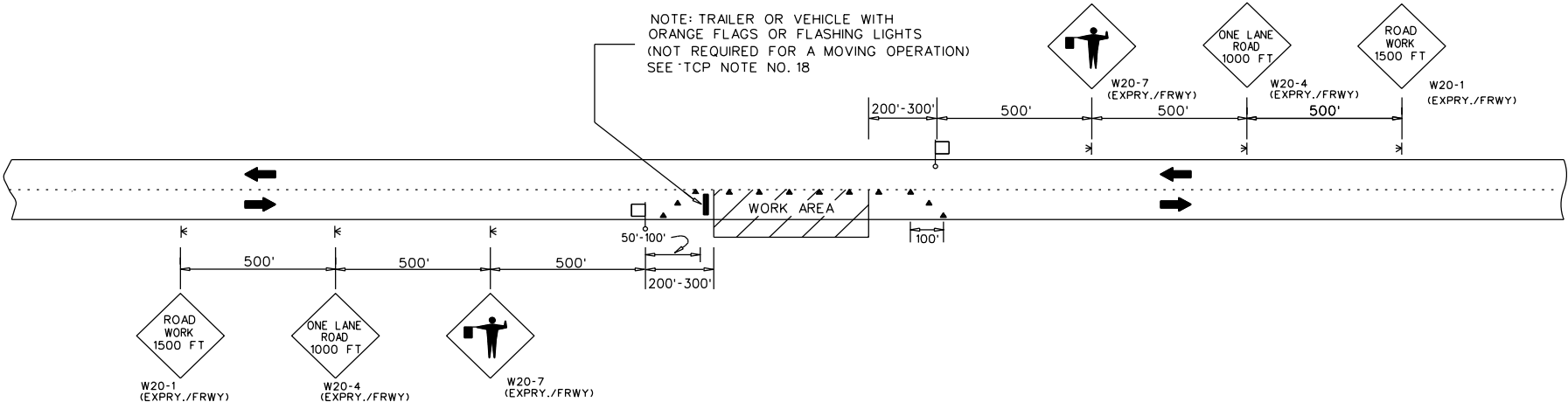
END ROAD WORK  
(PLACE 500 FT. PAST THE WORK LIMITS SHOWN ON THE TITLE SHEET)

G20-2

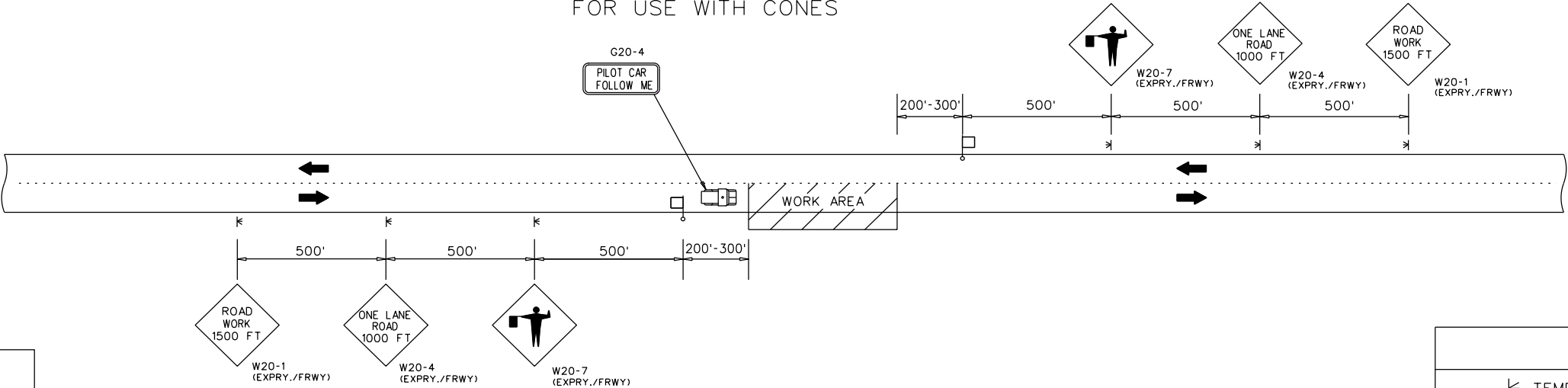
ROAD WORK NEXT XX MILES  
(PLACE IN ADVANCE OF THE WORK LIMITS SHOWN ON THE TITLE SHEET)

G20-1

NOTE: TRAILER OR VEHICLE WITH ORANGE FLAGS OR FLASHING LIGHTS (NOT REQUIRED FOR A MOVING OPERATION) SEE TCP NOTE NO. 18



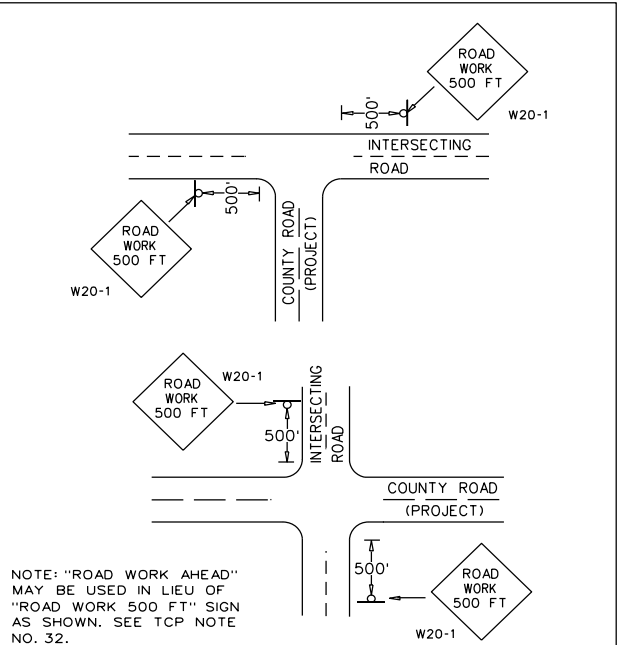
TWO LANE HIGHWAY - ONE LANE CLOSED  
FOR USE WITH CONES



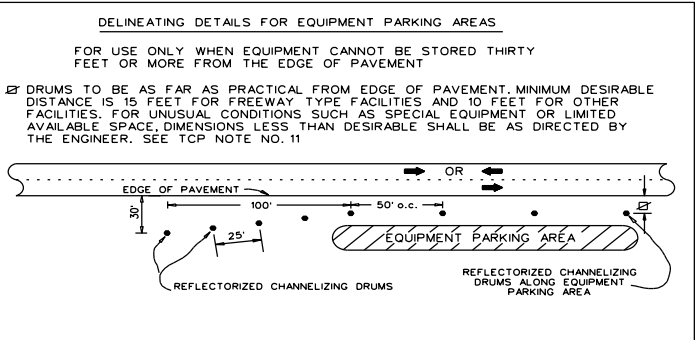
TWO LANE HIGHWAY - ONE LANE CLOSED  
FOR USE WITH PILOT CAR

LEGEND

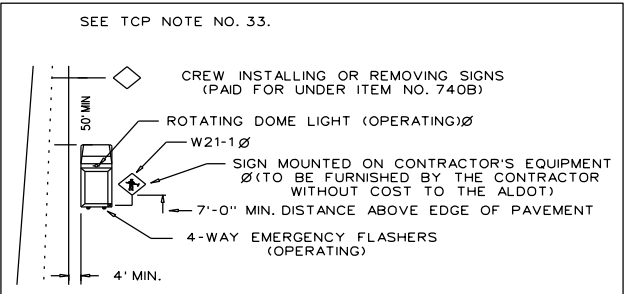
- TEMPORARY MOUNTED SIGN
- POST MOUNTED SIGN
- CONES
- FLAGGER



DETAIL FOR PLACEMENT OF W20-1 SIGN AT INTERSECTING ROADS



DELINEATING DETAILS FOR EQUIPMENT PARKING AREAS



T.C.P. FOR INSTALLING OR REMOVING CONSTRUCTION SIGNS

REVISIONS		ALABAMA DEPARTMENT OF TRANSPORTATION BUREAU OF COUNTY TRANSPORTATION TRAFFIC CONTROL PLAN DETAILS FOR LANE CLOSURE TWO LANE HIGHWAY PILOT CAR AND/OR CONE APPLICATION NOT TO SCALE
DRAWN - 01/05/07	REVISED SIGNS BASED ON	
REVISED NOTE - ADDED PAY PROVISIONS FOR W20-1(MIN) SIGN - 01/30/07	SIGN REVISIONS IN THE 2013 SPEC./STD. DRAWING BOOK 10/30/12	
DELETED DETAILS FOR W20-1(MIN) SIGN - 11/27/07		
REVISED NOTE NUMBER REFERENCES - 08/14/08		
ADDED LEGEND - 07/16/09		
ADDED PILOT CAR DETAIL 04/05/10		



PROJECT NO.	FISCAL YEAR	SHEET NO.
LCP 41-148-18	2018	7A

34. THE CONTRACTOR AND THE CONSTRUCTION ENGINEER SHALL DISCUSS AND PLAN FOR THE HANDLING OF TRAFFIC FOR ALL HOLIDAYS BEFORE ANY WORK BEGINS. UNLESS OTHERWISE PRE-APPROVED BY THE REGION ENGINEER. THE FOLLOWING SHALL HOLD:

THE CONTRACTOR SHALL NOT HAVE A LANE CLOSURE DURING THE FOLLOWING PERIODS UNLESS OTHERWISE DIRECTED BY THE ENGINEER OR ALDOT:

ALL SUNDAYS

FOR CHRISTMAS AND NEW YEARS DAY:  
FROM 11:59 PM DECEMBER 23 THROUGH 11:59 PM JANUARY 2.

FOR NATIONAL MEMORIAL DAY AND LABOR DAY:  
FROM 12:00 NOON THE FRIDAY BEFORE THE HOLIDAY THROUGH 11:59 PM THE DAY OF THE HOLIDAY.

FOR INDEPENDENCE DAY (THE 4TH OF JULY):  
FROM 12:00 NOON THE DAY BEFORE THE HOLIDAY TO 11:59 PM THE DAY OF THE HOLIDAY.

FOR THANKSGIVING DAY:  
FROM 12:00 NOON THE WEDNESDAY BEFORE THANKSGIVING DAY THROUGH 11:59 PM THE SUNDAY FOLLOWING THANKSGIVING DAY.

ANY OTHER STATE HOLIDAYS WILL BE HANDLED AS APPROVED BY THE PROJECT ENGINEER.

THE CONTRACTOR SHALL COORDINATE WITH THE ENGINEER AND LOCAL GOVERNMENT ON TRAFFIC AND/OR WORK RESTRICTIONS FOR LOCAL HOLIDAYS OR EVENTS NOT LISTED ON ALDOT'S LIST OF OFFICIAL HOLIDAYS.

REVISIONS		ALABAMA DEPARTMENT OF TRANSPORTATION
DRAWN - 03/04/13		
03/04/13-ADDED NOTE 34 TO BE USED AS NEEDED		
10/01/14 - REVISED NOTE 34 TO READ REGION ENGINEER		
		BUREAU OF COUNTY TRANSPORTATION
		TRAFFIC CONTROL PLAN  STANDARD NOTE SHEET